

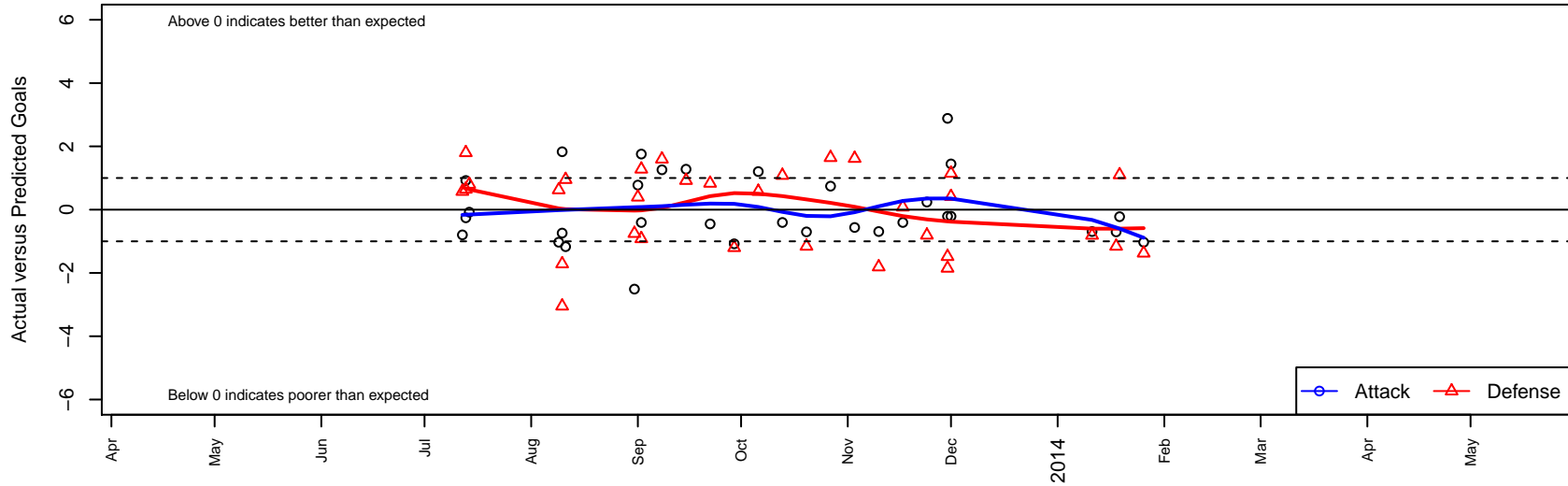
NSC Celtic B97

Northshore SC
 Woodinville, WA
 B97 total strength=1309
 attack=5.76 defense=5.93
 fall league = NPSL B16D1
 notes= Titans
 alt names used:
 NSC Celtic B97
 NSC Celtic 97
 NYSA Celtic
 NSC Celtic
 NSC Celtic Titans B97
 NSC Celtic – Bothell

Venues played:
 Seattle Cup BU16
 Mt Hood Challenge BU16 Silver
 Puyallup Valley Kick-off Div 1 U16
 NPSL B16D1
 Cranberry Cup U16
 Founders Cup B97



NSC Celtic B97
 Dots are actual minus expected GF (blue circles) and GA (red triangles).
 Blue line is smoothed change in attack strength. Red is smoothed change in defense strength.



	date	home		away		venue	pred.home	pred.away
21904	2014-01-26	Washington Timbers Burgundy B97	3	NSC Celtic B97	0	Founders Cup B97	1.62	1.03
21556	2014-01-19	NSC Celtic B97	1	Norpoint AC Milan B98	0	Founders Cup B97	1.22	1.10
21418	2014-01-18	Lake Hills Impact B97	4	NSC Celtic B97	0	Founders Cup B97	2.84	0.70
21181	2014-01-11	NSC Celtic B97	0	WS Jets B97	3	Founders Cup B97	0.69	2.19
20485	2013-12-01	NSC Celtic B97	4	WS Barca B97	0	Cranberry Cup U16	2.55	0.41
20487	2013-12-01	Coastal FC 1998B	2	NSC Celtic B97	0	Cranberry Cup U16	3.15	0.21
20212	2013-11-30	MCT B97	2	NSC Celtic B97	8	Cranberry Cup U16	0.52	5.12
20214	2013-11-30	NSC Celtic B97	0	Coastal FC 1998B	5	Cranberry Cup U16	0.21	3.15
19410	2013-11-24	NSC Celtic B97	1	Crossfire Select Cline B97	3	NPSL B16D1	0.76	2.19
18893	2013-11-17	NSC Celtic B97	0	Seattle United NE Blue B97	2	NPSL B16D1	0.41	2.08
18195	2013-11-10	NSC Celtic B97	0	WS Jets B97	4	NPSL B16D1	0.69	2.19
17387	2013-11-03	Nortac Colibri Pablo B97	1	NSC Celtic B97	0	NPSL B16D1	2.62	0.56
16358	2013-10-27	NSC Celtic B97	2	Seattle United Shoreline Blue B97	0	NPSL B16D1	1.26	1.64
15486	2013-10-20	NSC Celtic B97	0	Lake Hills Impact B97	4	NPSL B16D1	0.70	2.84
14572	2013-10-13	Seattle United NE Blue B97	1	NSC Celtic B97	0	NPSL B16D1	2.08	0.41
13501	2013-10-06	Seattle United W Blue B97	1	NSC Celtic B97	2	NPSL B16D1	1.58	0.80
12460	2013-09-29	NSC Celtic B97	0	Crossfire Select Enslow B97	3	NPSL B16D1	1.08	1.80
11590	2013-09-22	Kent United Green B98	2	NSC Celtic B97	0	NPSL B16D1	2.83	0.45
10609	2013-09-15	Kent United Green B97	1	NSC Celtic B97	2	NPSL B16D1	1.92	0.72
9627	2013-09-08	Mercer Island FC Warriors B97	0	NSC Celtic B97	2	NPSL B16D1	1.60	0.74
8803	2013-09-02	NSC Celtic B97	4	PSC Thunder B97	0	Puyallup Valley Kick-off Div 1 U16	2.24	1.28
8805	2013-09-02	NSC Celtic B97	0	Seattle United NE Blue B97	3	Puyallup Valley Kick-off Div 1 U16	0.41	2.08
8737	2013-09-01	FME Xtreme B97	0	NSC Celtic B97	4	Puyallup Valley Kick-off Div 1 U16	0.40	3.22
8615	2013-08-31	NSC Celtic B97	1	Kent United White B97	1	Puyallup Valley Kick-off Div 1 U16	3.51	0.25
6571	2013-08-11	NSC Celtic B97	0	Washington Timbers Crimson B97	0	Mt Hood Challenge BU16 Silver	1.17	0.95
6332	2013-08-10	Washington Timbers Crimson B97	4	NSC Celtic B97	3	Mt Hood Challenge BU16 Silver	0.95	1.17
6337	2013-08-10	Albany FC Pursuit B98	3	NSC Celtic B97	0	Mt Hood Challenge BU16 Silver	1.29	0.74
6010	2013-08-09	Washington Timbers Burgundy B97	1	NSC Celtic B97	0	Mt Hood Challenge BU16 Silver	1.62	1.03

	date	home		away		venue	pred.home	pred.away
3277	2013-07-14	Crossfire Select Enslow B97	1	NSC Celtic B97	1	Seattle Cup BU16	1.80	1.08
3090	2013-07-13	Seattle United Shoreline Blue B97	1	NSC Celtic B97	1	Seattle Cup BU16	1.64	1.26
3092	2013-07-13	NSC Celtic B97	2	Crossfire Select Enslow B97	0	Seattle Cup BU16	1.08	1.80
2844	2013-07-12	NSC Celtic B97	0	Seattle United W Blue B97	1	Seattle Cup BU16	0.80	1.58